

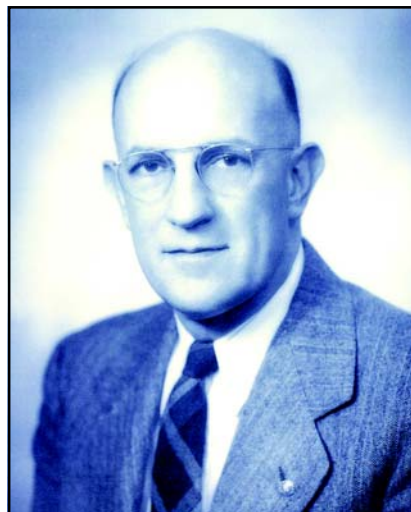
## History of Beardsley Design Associates



*Samuel E. Hillger at his drafting table. (1924)*

Samuel E. Hillger came to Auburn, NY and opened an Architectural Office in the Seward Building on November 18, 1898. His practice was generally focused on residential, industrial, and commercial work. His office gradually grew to about four employees in 1909 and stayed about that size until 1923 when he, along with Carl C. Tallman (who later moved to Ithaca), designed the Auburn Memorial Hospital constructed in 1924-1925. At that time the office enlarged to a more substantial group of about twelve, including Wallace P. Beardsley, Architect and Engineer from Syracuse who worked for two years on the Auburn Memorial Hospital, providing structural design and field supervision.

In 1928, Mr. Hillger invited Mr. Beardsley to form a partnership and this organization functioned as **Hillger and Beardsley** with eight to ten employees providing design and civil engineering services. Major projects designed during this period were Mercy Hospital and Auburn Senior High School (now East Middle School) built in 1931. In 1935, Samuel E. Hillger passed away and Wallace Beardsley continued the practice. Two important projects at this time were Central and West High Schools in Auburn.



*James P. Beardsley*

In 1946, Lt. James P. Beardsley (Wallace Beardsley's son) returned from the Corps of Engineers in China to work in the office. He became registered in New York State and a partner in 1948, forming the firm of **Beardsley & Beardsley, Architects**, and still located in the original office in the Seward Bank Building at 98 Genesee Street.

In October 1949, Wallace P. Beardsley, Jr. started working as a draftsman with the firm. In December 1949, the office left the Seward Bank Building and moved into the former residence of James L. Seymour at 64 South Street. The office gradually grew to eighteen people designing housing projects in Auburn and Ogdensburg, schools in Auburn, Homer, Watertown, Skaneateles, and Moravia, and the first Methodist Church in Auburn.

## History of Beardsley Design Associates



*Wallace P. Beardsley, Jr., Gerald F. Cowden,  
James P. Beardsley and "Jack" Reilly (1973)*

On May 18, 1952, Wallace Beardsley Sr. died from a heart attack. Jim Beardsley continued the operation of the firm and in January 1953, Wally, Jr. and Jim continued the firm of **Beardsley and Beardsley Architects** as partners. An important job for the firm at this time was the Mount Carmel High School. During the 50's and 60's a major portion of the work involved public school projects throughout central New York and the 1958 East Wing at Auburn Memorial Hospital. Many repeat clients were maintained in addition to public work, industrial, and commercial projects.

In 1971, the partnership was enlarged by the addition of Gerald Cowden Sr. and Jack Reilly. During the early 70's the firm gradually grew to about 35 total staff. The overall scope of projects remained generally in central New York and broadened out somewhat with the addition of several Federal Projects and an expanded capability in the field of architecture and engineering.

In 1972, the firm was organized as **Beardsley & Beardsley, Architects and Engineers, P.C.** (Professional Corporation). In 1980, Jack Reilly retired and the firm was reorganized with the addition of James J. Glass, P.E., as a Director, expanding the Electrical Department. The firm name was changed to **Beardsley, Beardsley, Cowden & Glass, Architects/Engineers, P.C.** This capability for a broad, full service, in-house professional design group enhanced the industrial and governmental market with projects done for State and Federal agencies and major industrial firms such as R.T. French, Mobil Chemical, Gunlocke Furniture, Widmer Wine, New York Telephone, and Alco (American Locomotive Company).

In October 1986, Jim Beardsley retired from the firm, in 1989 by his brother Wally, Jr.



*James J. Glass, Robert G. Stevens, Gerald F. Cowden (1989)*

## History of Beardsley Design Associates



*Current Board of Directors (left to right) Steven F. Moolin, R.A., Raymond N. Cudney, P.E., Richard C. Elliott, P.E., Mark A. Rebich, P.E. and John W. Drury, P.E. (2006)*

In March 1998 in conjunction with the 100th anniversary of the Firm, the stockholders approved the firm name change to **Beardsley Design Associates, Architecture, Engineering and Landscape Architecture P.C.**

In September 2000, Beardsley Design Associates merged with Camens Architecture from Malone, NY increasing staff size by six and adding a second office. In December 2000, Beardsley Design Associates merged with C&H Engineers from Syracuse, increasing staff by fourteen and a third office location.

Today the Board of Directors is made up of Richard C. Elliott, P.E., John W. Drury, P.E., Raymond N. Cudney, P.E., Steven F. Moolin, R.A., and Mark A. Rebich, P.E.

The firm has gradually grown to the present size of approximately 100 employees and maintains a steady volume of work in the government, commercial, educational, healthcare, and industrial markets.

Beardsley Design Associates has become a leader in new design and construction practices including sustainable and green design, design-build project delivery, geothermal engineering, and commissioning of buildings. The firm serves a wide range of clients throughout the northeast and mid-Atlantic regions and prides itself on a high volume of repeat business.



*Samuel Hillger's drafting table displayed at Beardsley Design Associates. (2006)*