




Adirondack Camps & Boathouses


beardsley
architects + engineers



Welcome to Beardsley.

We specialize in Adirondack camp and boathouse architecture.

Your Success. Our Priority.



We're more than architects and engineers. We're partners in problem-solving with a storied history of collaboration for creative solutions. We work together with our clients to anticipate project needs before they arise, delivering creative, sustainable, and cost-effective solutions at every step.

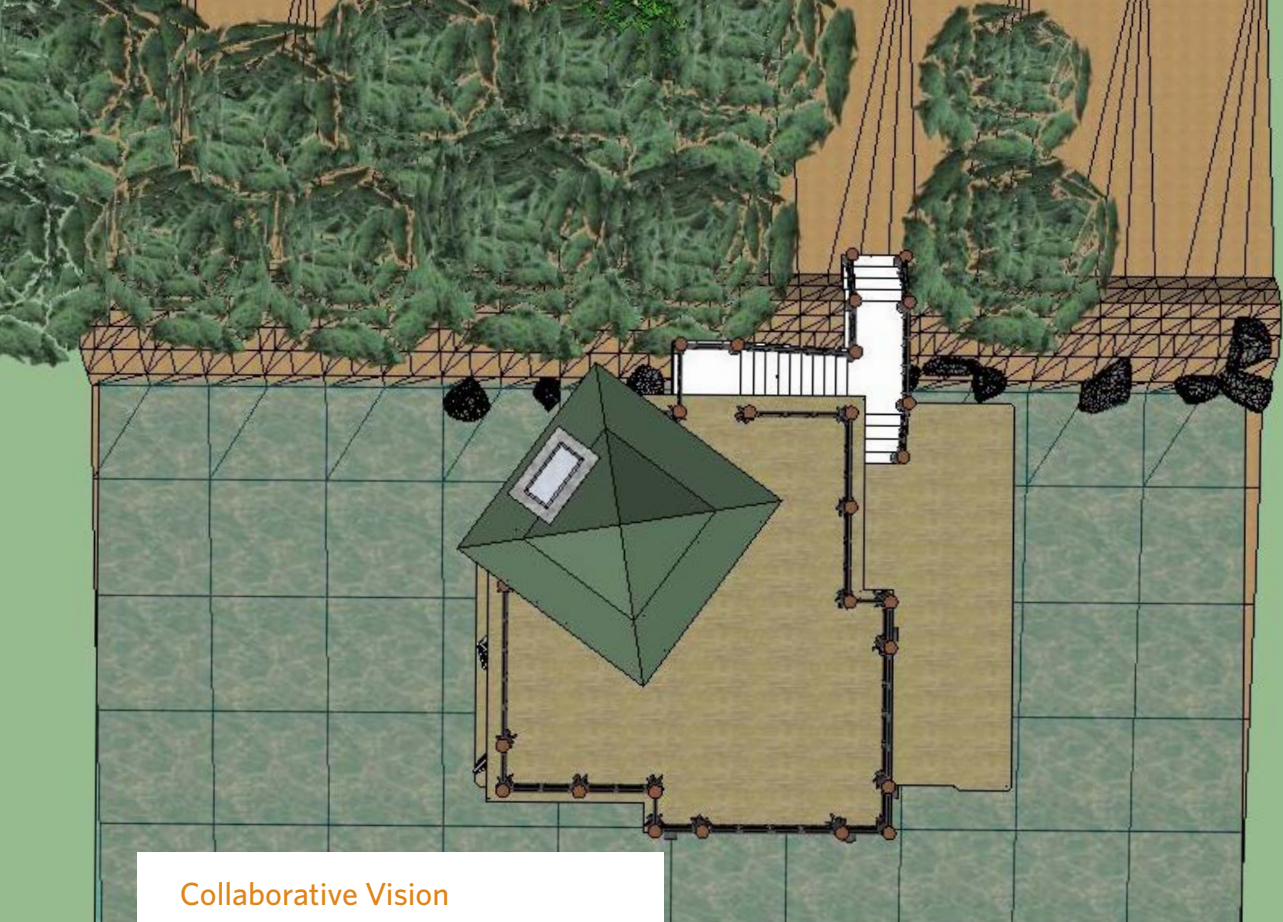
Beardsley offers a full suite of architecture, engineering, and landscape architecture services, giving clients comprehensive resources for complex projects.

Our service areas include:

- | | |
|------------------------|----------------------------------|
| Architecture | Commissioning |
| Interior Design | Electrical Engineering |
| Master Planning | Fire Protection |
| Sustainable Design | Security Engineering |
| Landscape Architecture | Fire Alarm/
Mass Notification |
| Site Planning | Environmental Engineering |
| Civil Engineering | Construction Phase Services |
| Structural Engineering | Building Information Modeling |
| Mechanical Engineering | |

Contact us. Learn how we can collaborate with you.
For more information, visit beardsley.com.





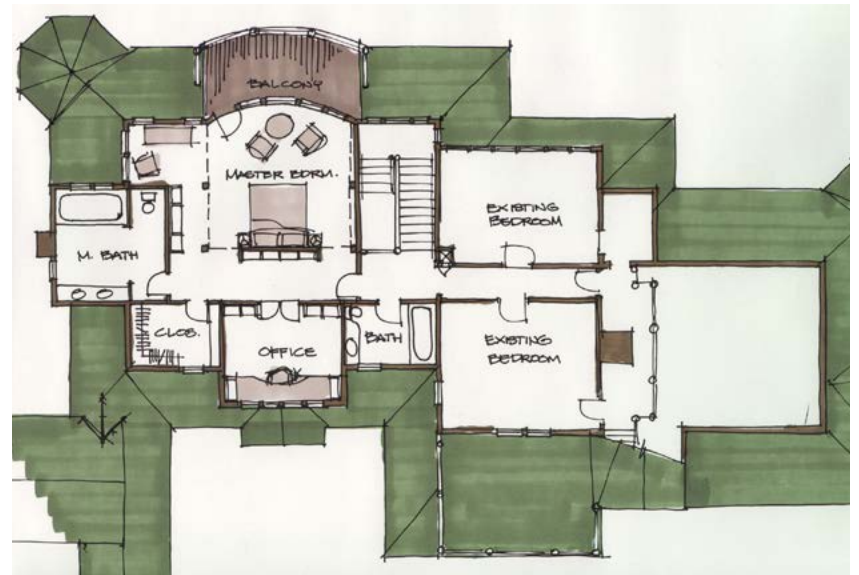
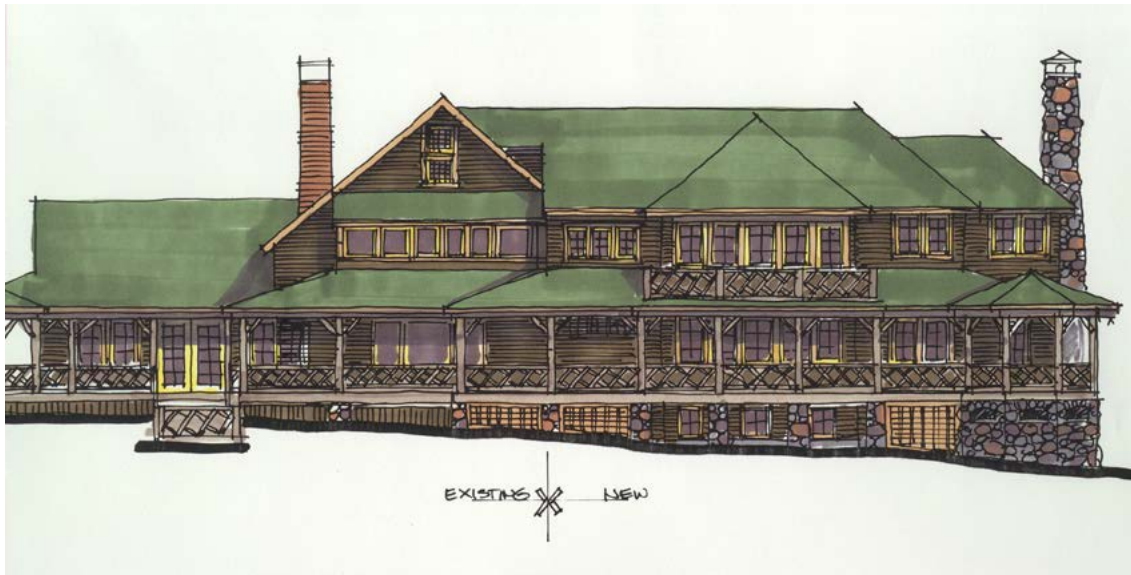
Collaborative Vision

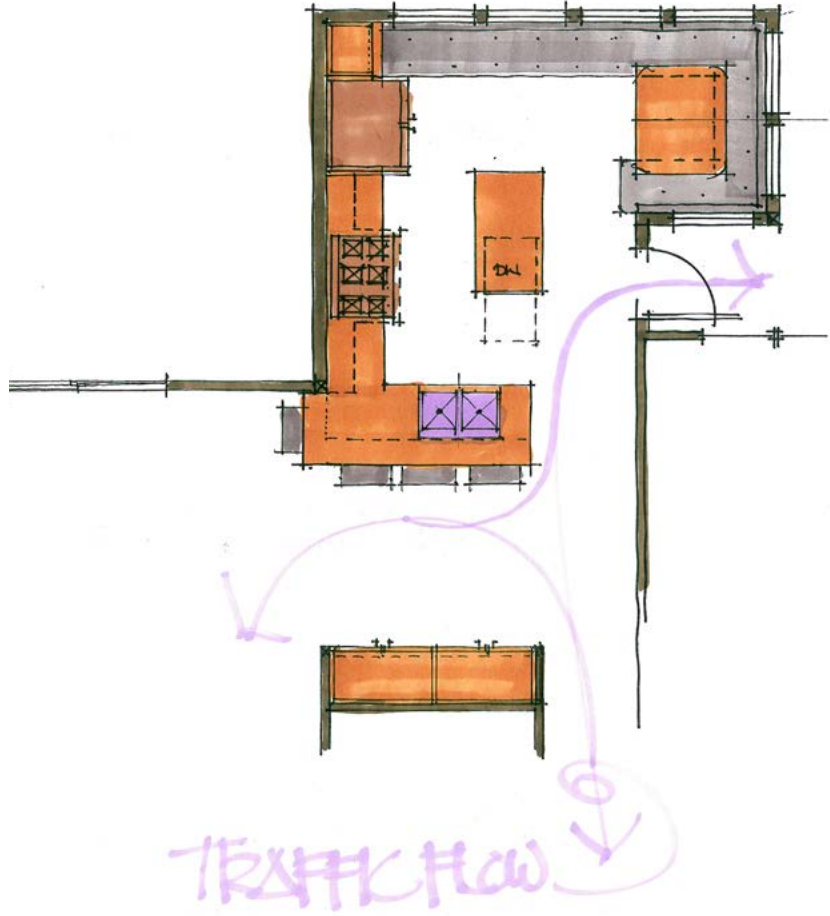
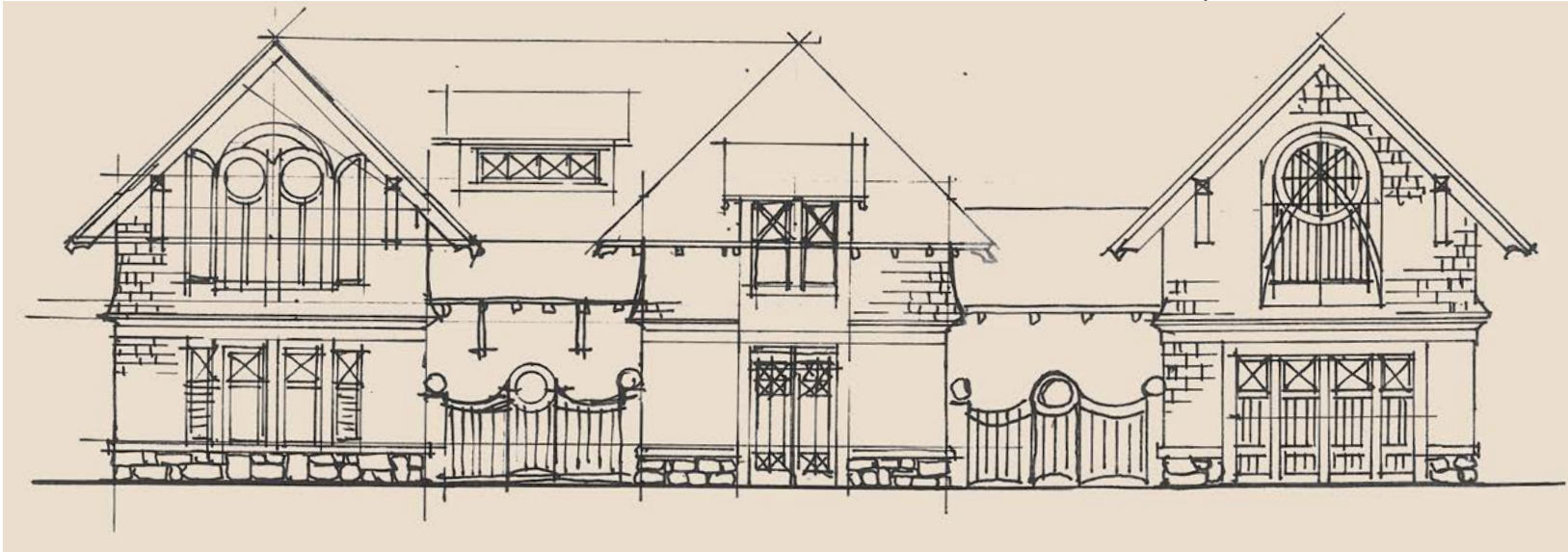
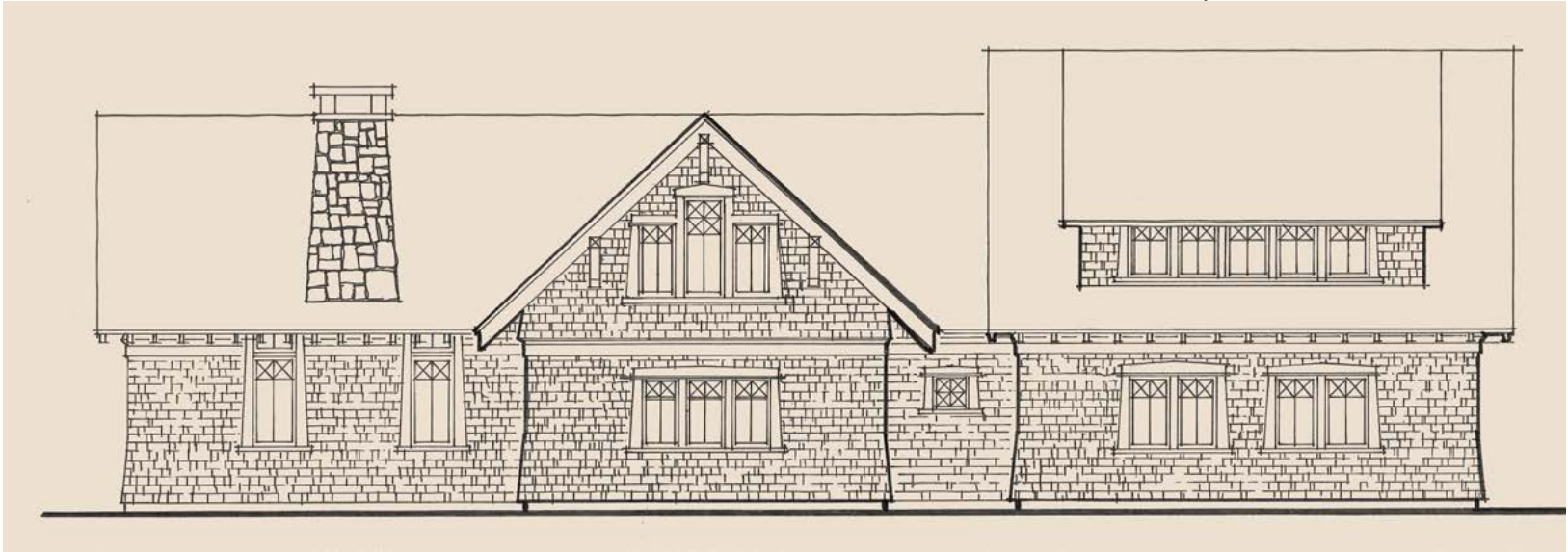
More than just designing spaces for people to live in, we design with the intent to create a sense of place. The first step is to develop conceptual designs that visually illustrate our clients' ideas before moving on to developing technical documents.

The conceptual design phase allows our clients to see their vision rendered on paper and allows Beardsley to fully understand and realize that vision.



Conceptual Design

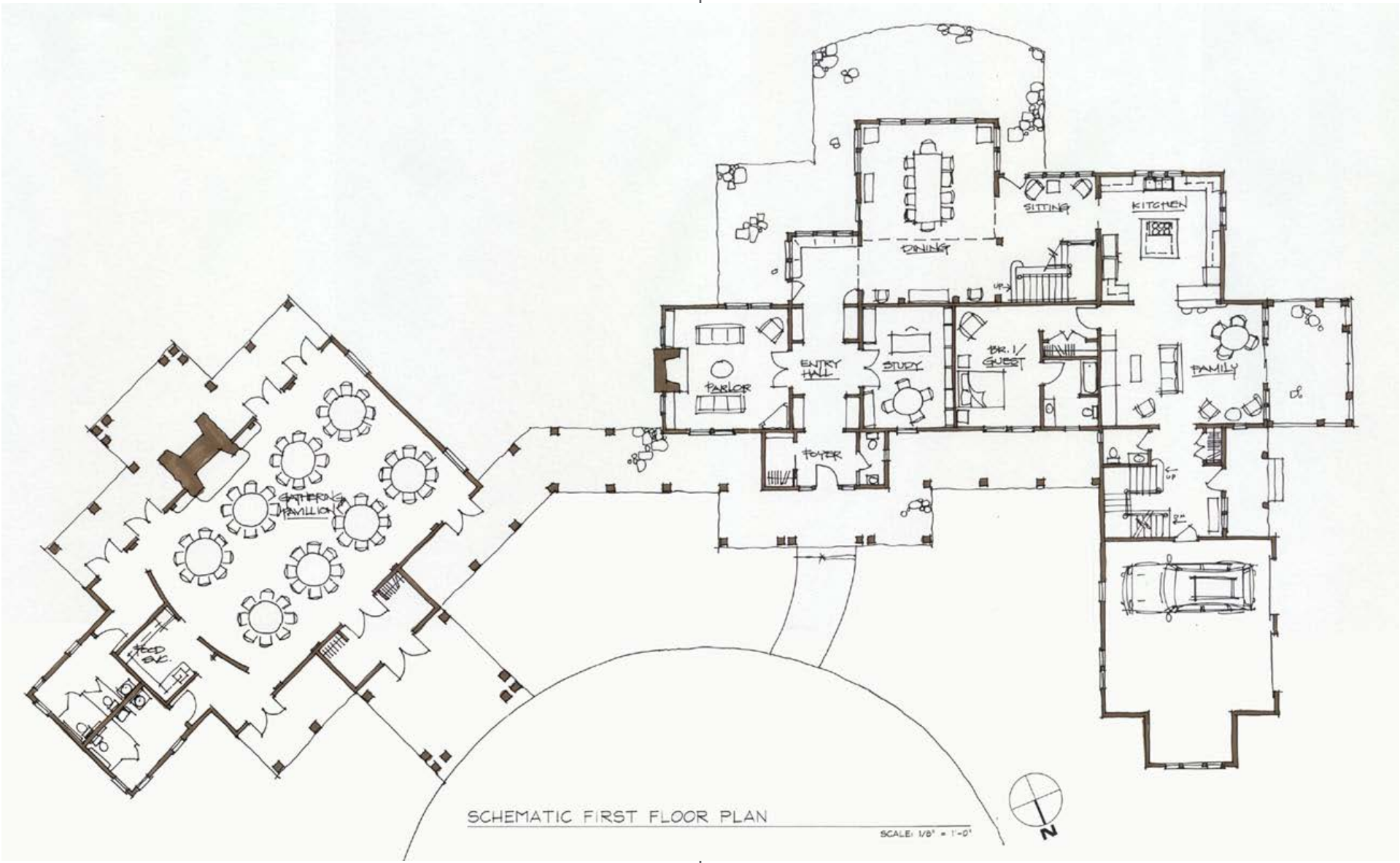






We understand that building within the Adirondack Park comes with its own unique set of challenges. Our expertise in residential construction includes experience in coordinating with regulatory agencies within the Park. We know the time it takes for projects to be planned, and we are prepared to assist our clients with the permitting and approval process so that their projects can move forward as smoothly and quickly as possible.





SCHEMATIC FIRST FLOOR PLAN

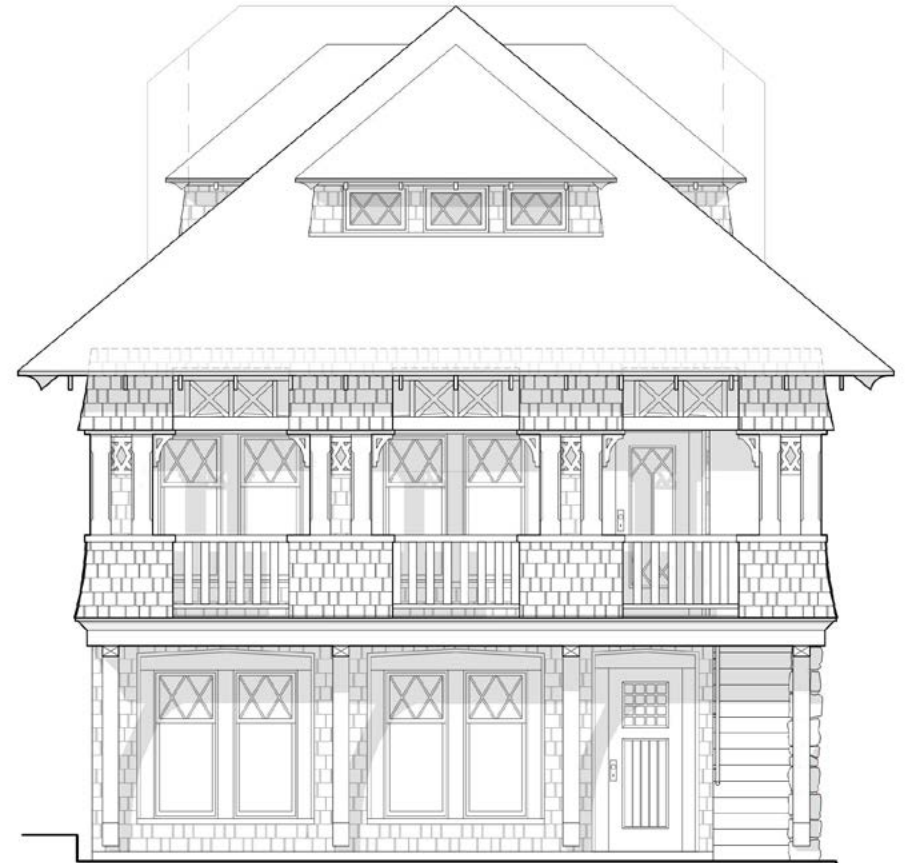
SCALE: 1/8" = 1'-0"



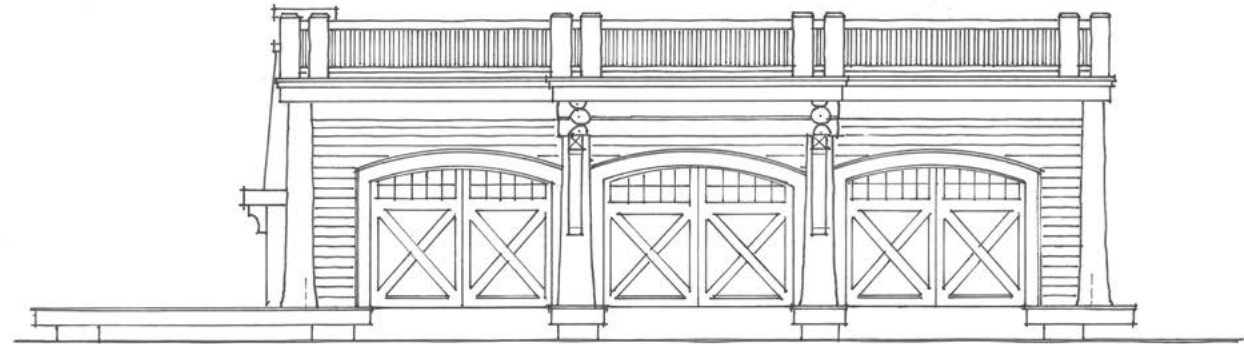
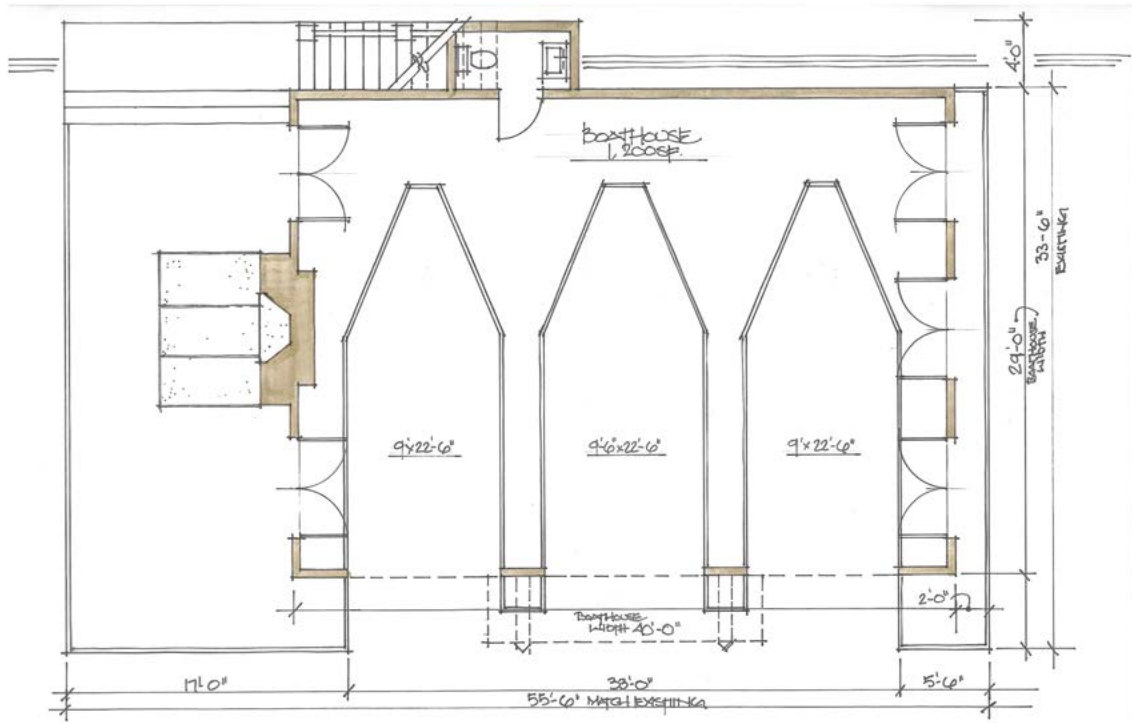


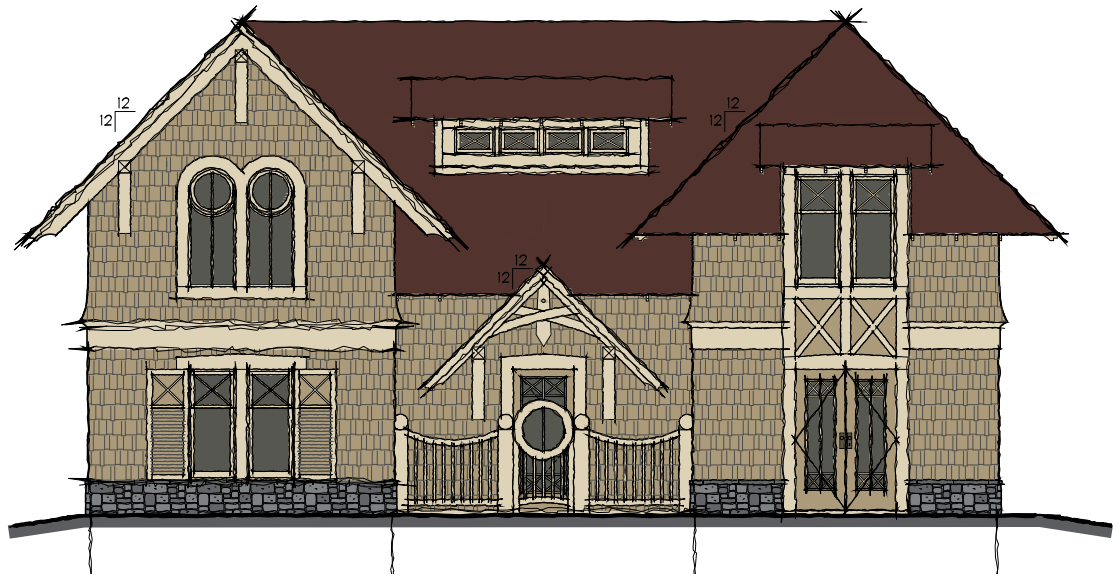


B EXTERIOR ELEVATION
SCALE: 3/8" = 1'-0"

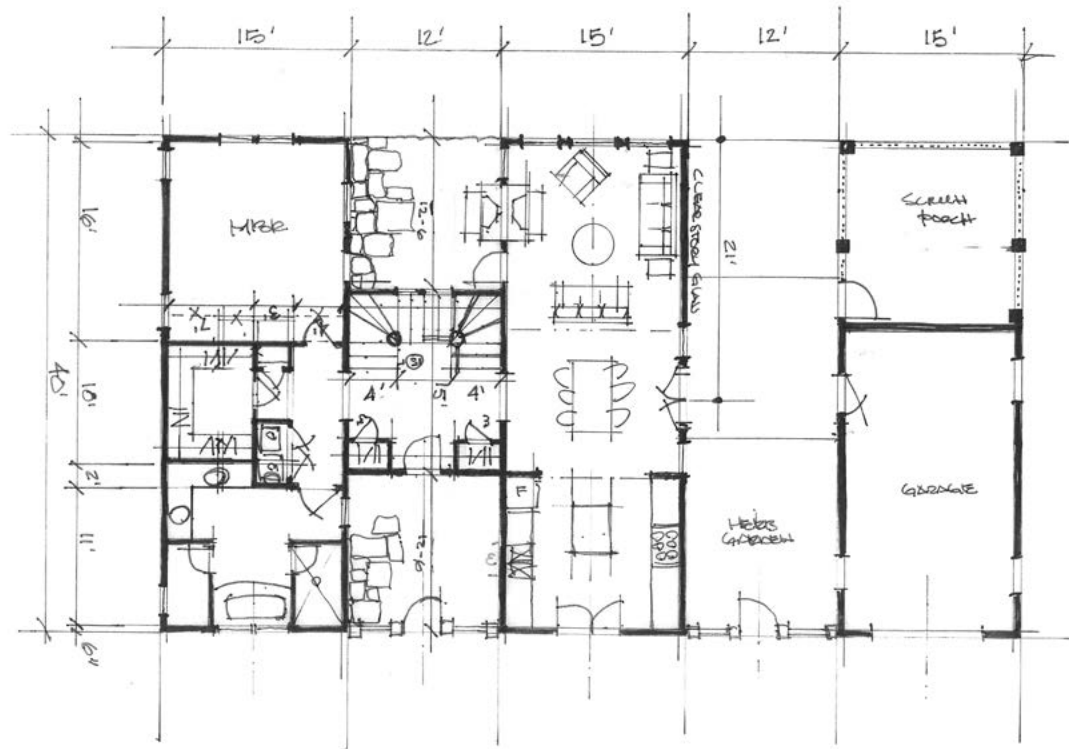


A EXTERIOR ELEVATION
SCALE: 3/8" = 1'-0"





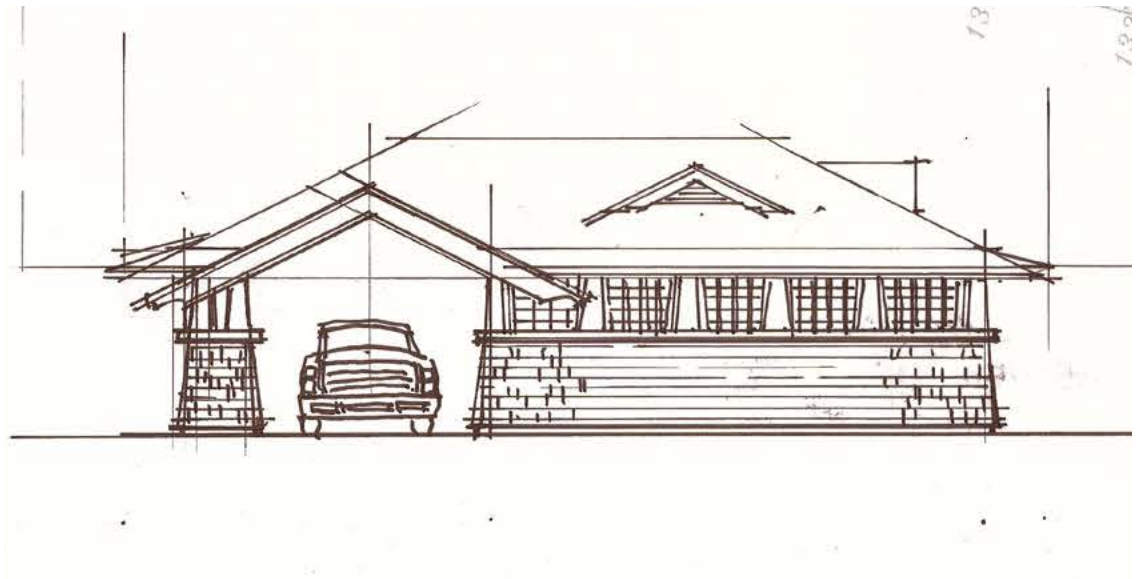
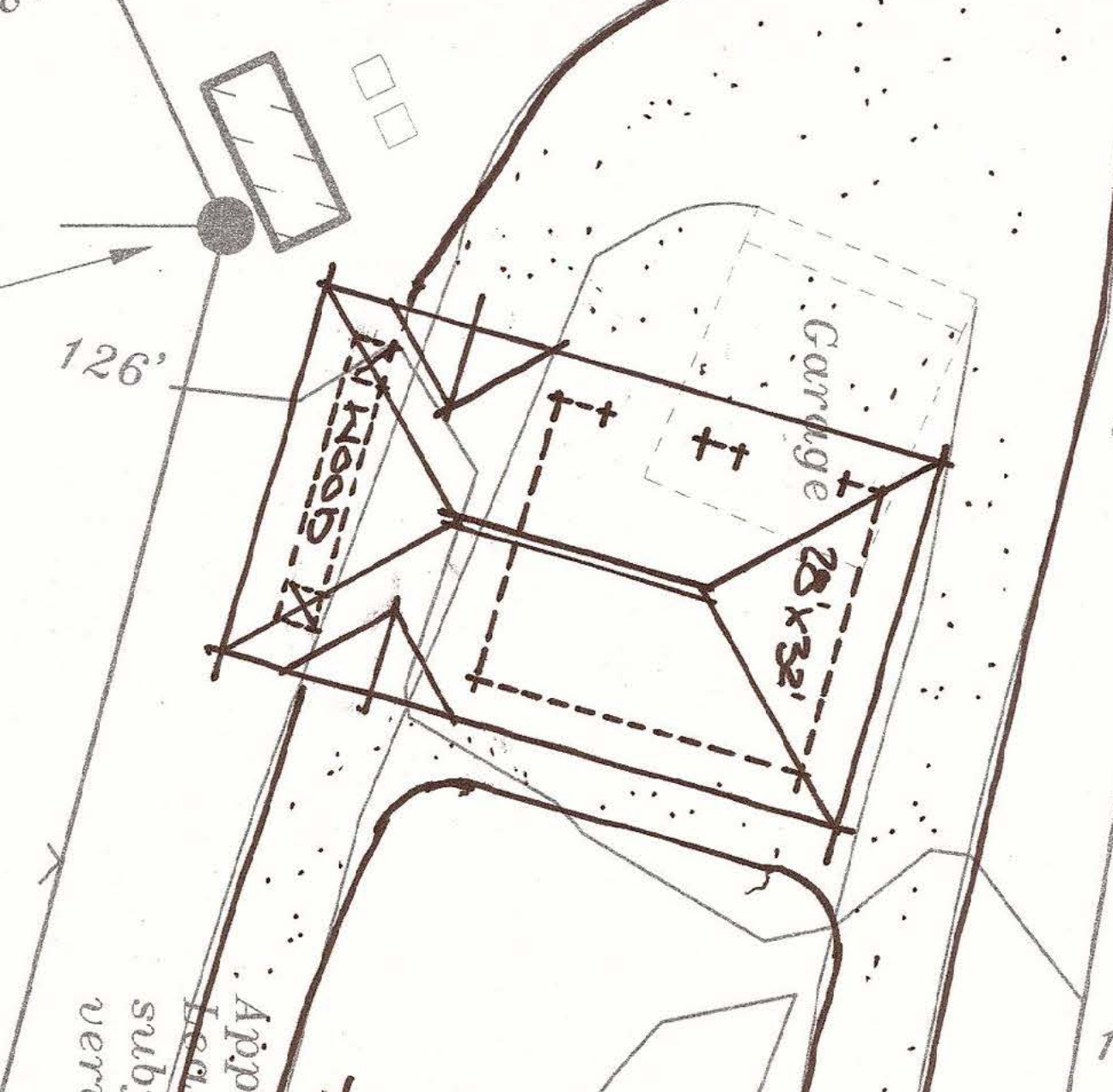
81













Full-Service Insight

The design of a home is as unique as the people that live there, and each project requires a design approach that takes location and the client's vision into account. Whether it's a new home, renovation, or addition, we pay close attention to the details that matter to you to create an environment that works for you.

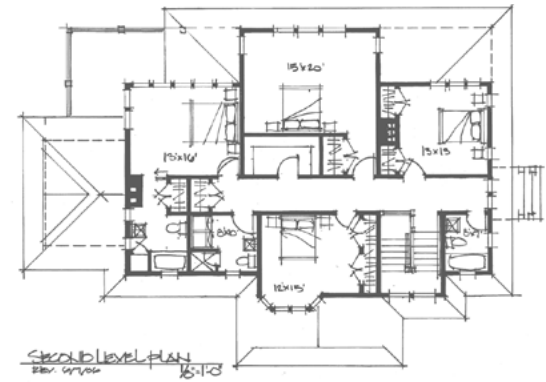
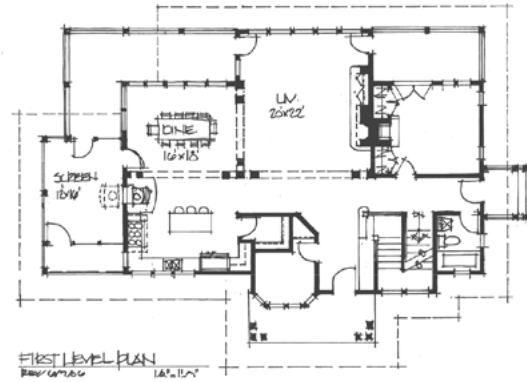
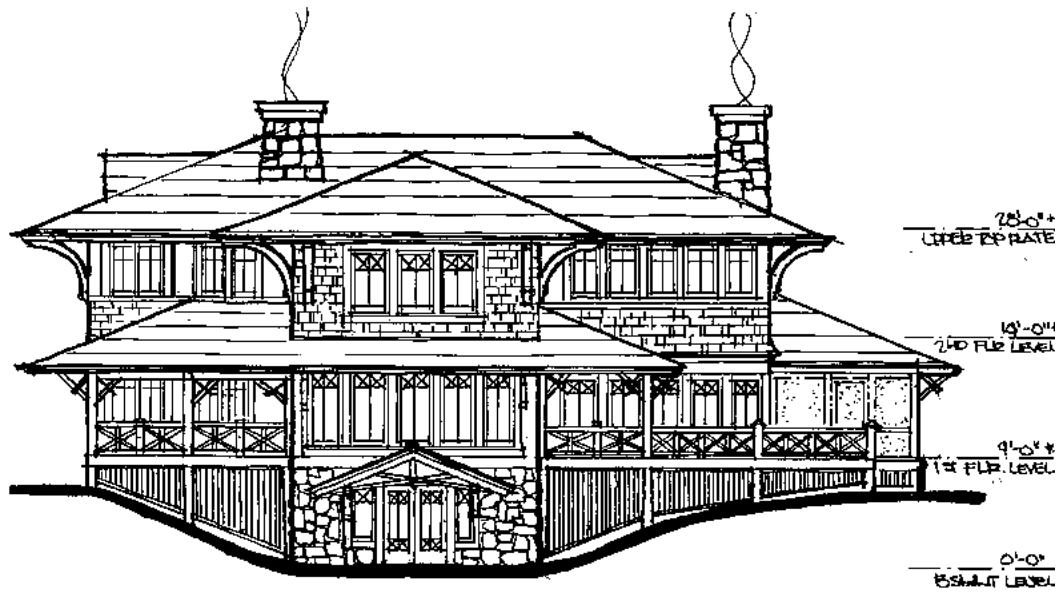
As a true project partner, we assist with bid evaluation and negotiation with contractors, as well as with construction review and project close-out. Long after a project is complete,

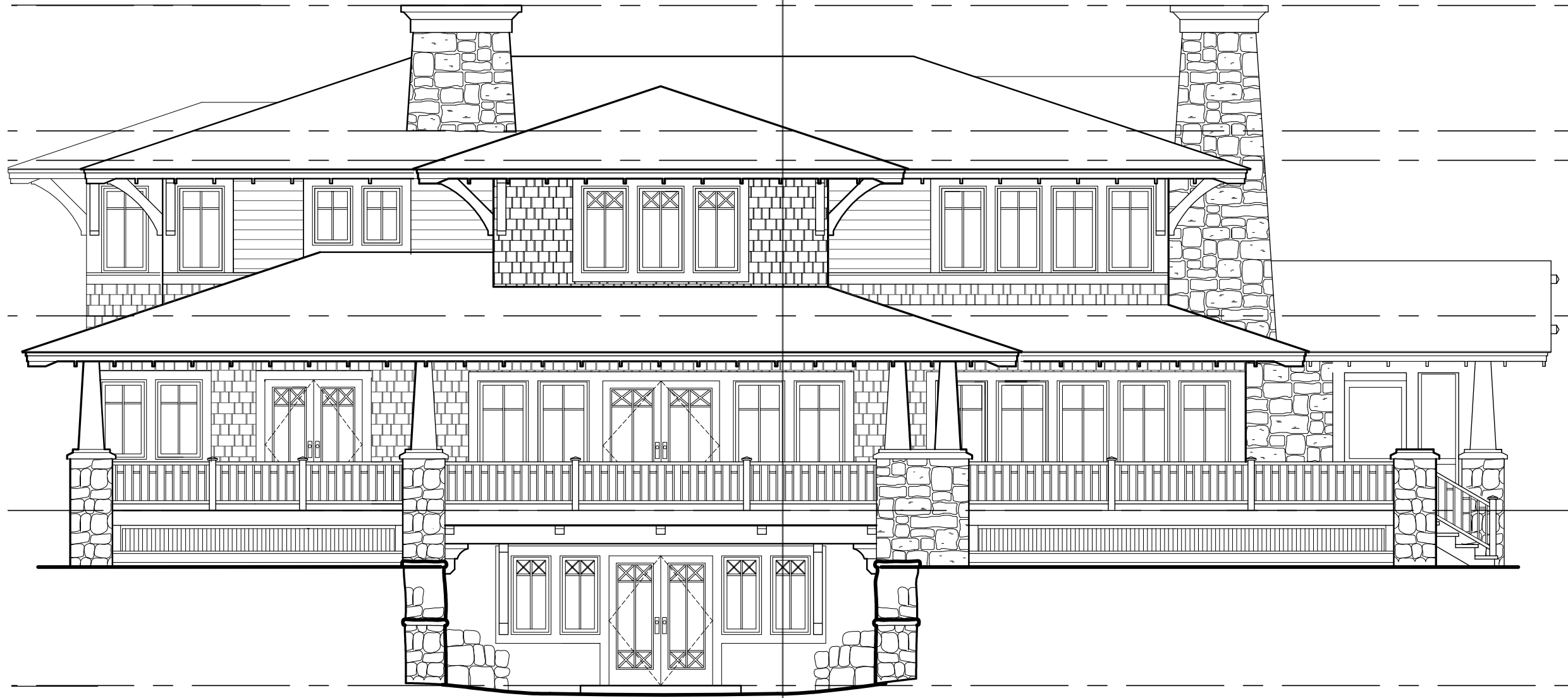
Beardsley is always there for our clients' continuing needs and questions.

Through comprehensive architectural and engineering design services, we are able to blend design excellence with holistic sustainable design. Not only should projects reflect conscious building materials selection, they also need to consider long-term operational/maintenance considerations to fully realize the benefits of sustainability.

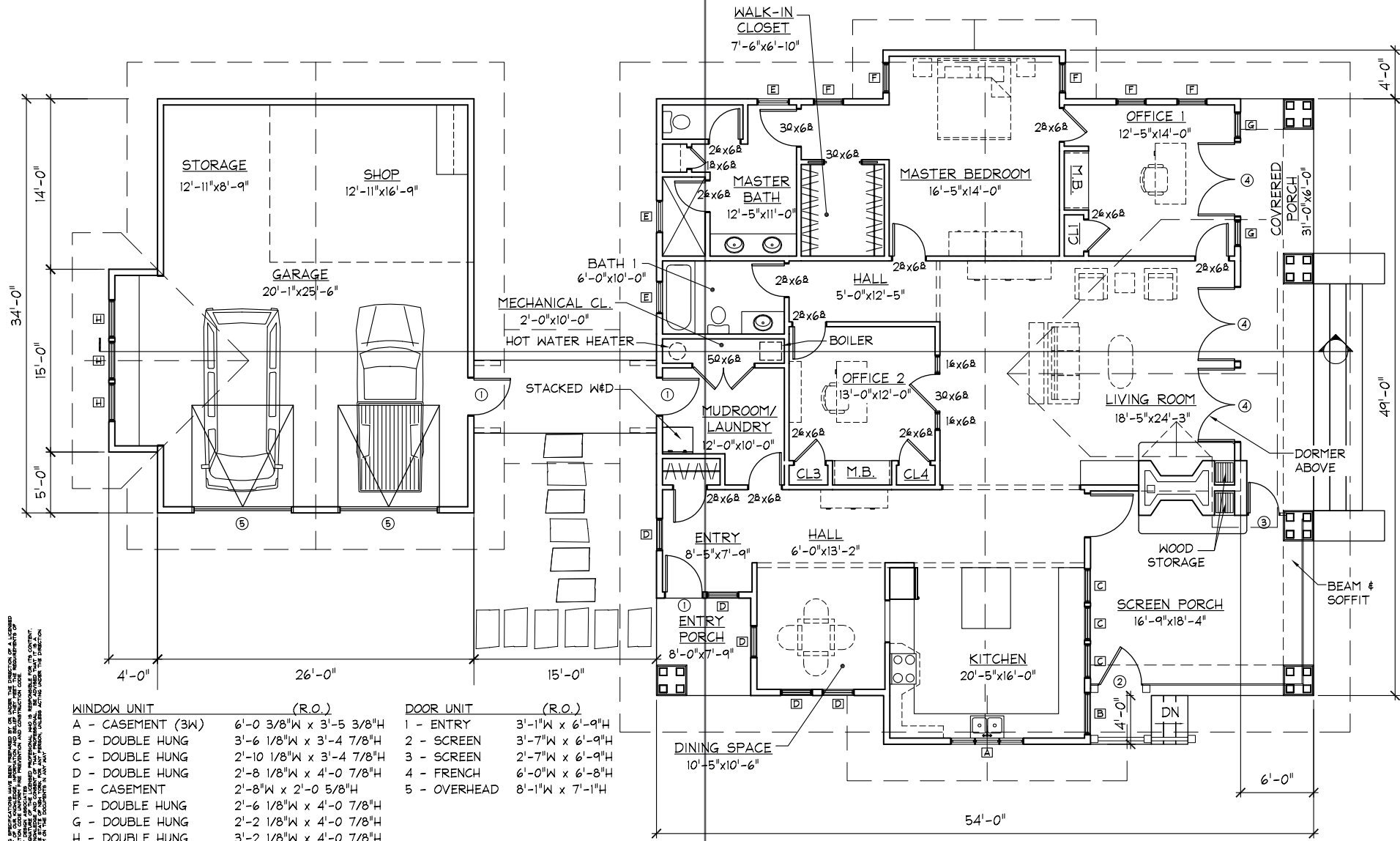












WINDOW UNIT	(R.O.)	DOOR UNIT	(R.O.)
A - CASEMENT (3W)	6'-0 3/8"W x 3'-5 3/8"H	1 - ENTRY	3'-1"W x 6'-9"H
B - DOUBLE HUNG	3'-6 1/8"W x 3'-4 7/8"H	2 - SCREEN	3'-7"W x 6'-9"H
C - DOUBLE HUNG	2'-10 1/8"W x 3'-4 7/8"H	3 - SCREEN	2'-7"W x 6'-9"H
D - DOUBLE HUNG	2'-8 1/8"W x 4'-0 7/8"H	4 - FRENCH	6'-0"W x 6'-8"H
E - CASEMENT	2'-8"W x 2'-0 5/8"H	5 - OVERHEAD	8'-1"W x 7'-1"H
F - DOUBLE HUNG	2'-6 1/8"W x 4'-0 7/8"H		
G - DOUBLE HUNG	2'-2 1/8"W x 4'-0 7/8"H		
H - DOUBLE HUNG	3'-2 1/8"W x 4'-0 7/8"H		

A SCHEMATIC FLOOR PLAN
SCALE: 1/8" = 1'-0"

S.Q. FT. AREA - 2286 S.F.
(MEASURED FROM INSIDE FACE OF EXT. WALLS)

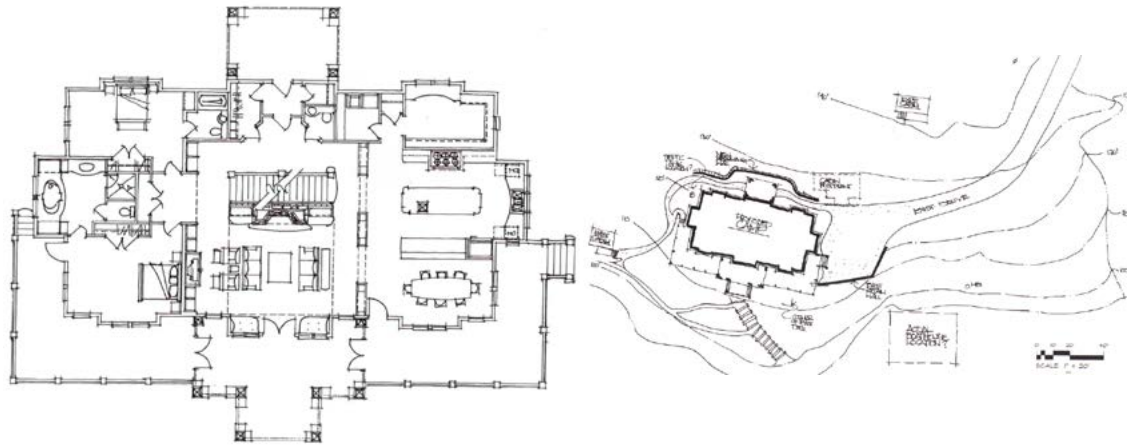
ALL DIMENSIONS AND ANY ACCOMPANYING SPECIFICATIONS HAVE BEEN PREPARED BY OR UNDER THE DIRECTION OF A LICENSED ARCHITECT. THE ARCHITECT'S RESPONSIBILITY IS LIMITED TO THE DESIGN AND CONSTRUCTION OF THE BUILDING AS SHOWN ON THESE PLANS. THE ARCHITECT DOES NOT ASSUME RESPONSIBILITY FOR THE DESIGN OR CONSTRUCTION OF ANY MECHANICAL, ELECTRICAL, OR PLUMBING SYSTEMS, OR FOR THE DESIGN OR CONSTRUCTION OF ANY STRUCTURE NOT SHOWN ON THESE PLANS. THE ARCHITECT DOES NOT ASSUME RESPONSIBILITY FOR THE DESIGN OR CONSTRUCTION OF ANY STRUCTURE NOT SHOWN ON THESE PLANS. THE ARCHITECT DOES NOT ASSUME RESPONSIBILITY FOR THE DESIGN OR CONSTRUCTION OF ANY STRUCTURE NOT SHOWN ON THESE PLANS.

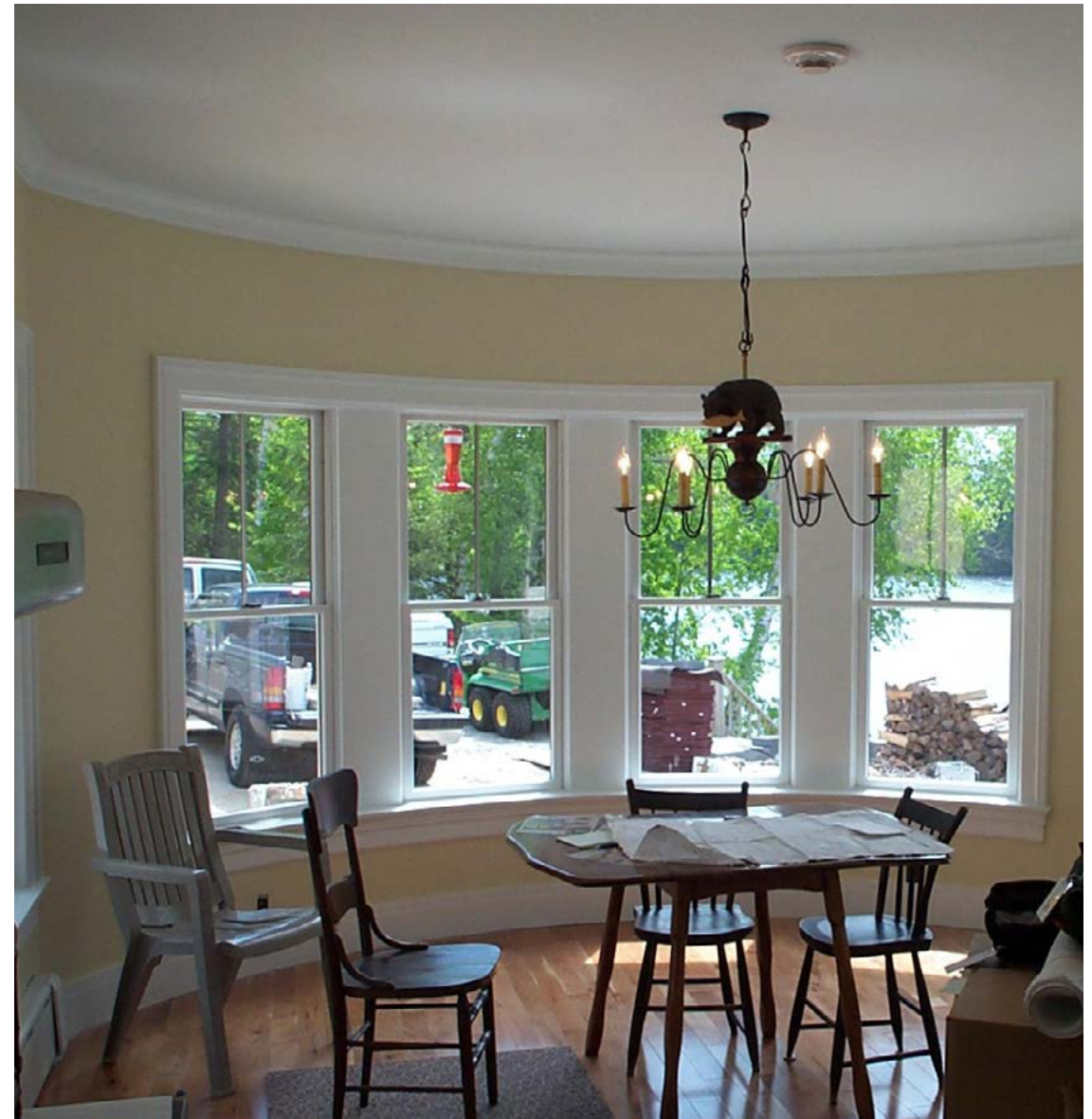




























Furnishings Consultant: Ann Stillman O'Leary





Furnishings Consultant: Ann Stillman O'Leary



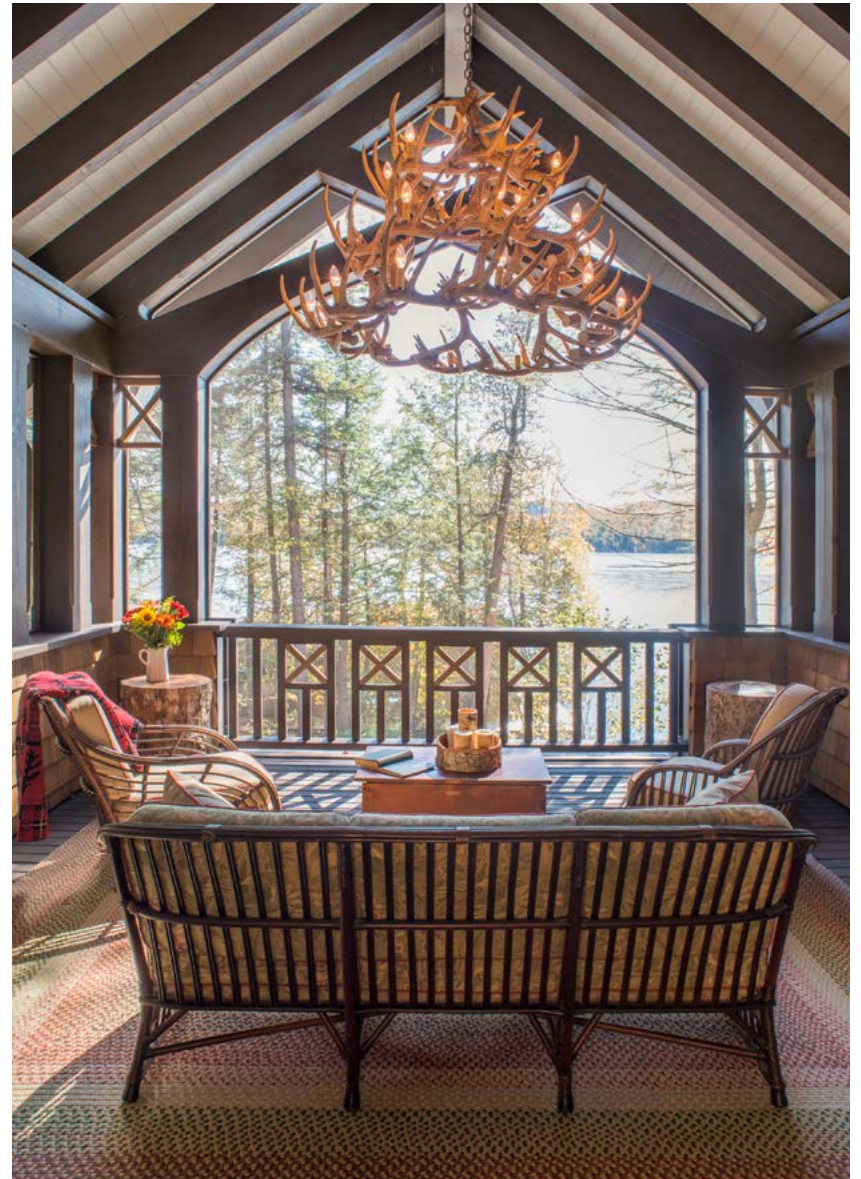




























Boathouses











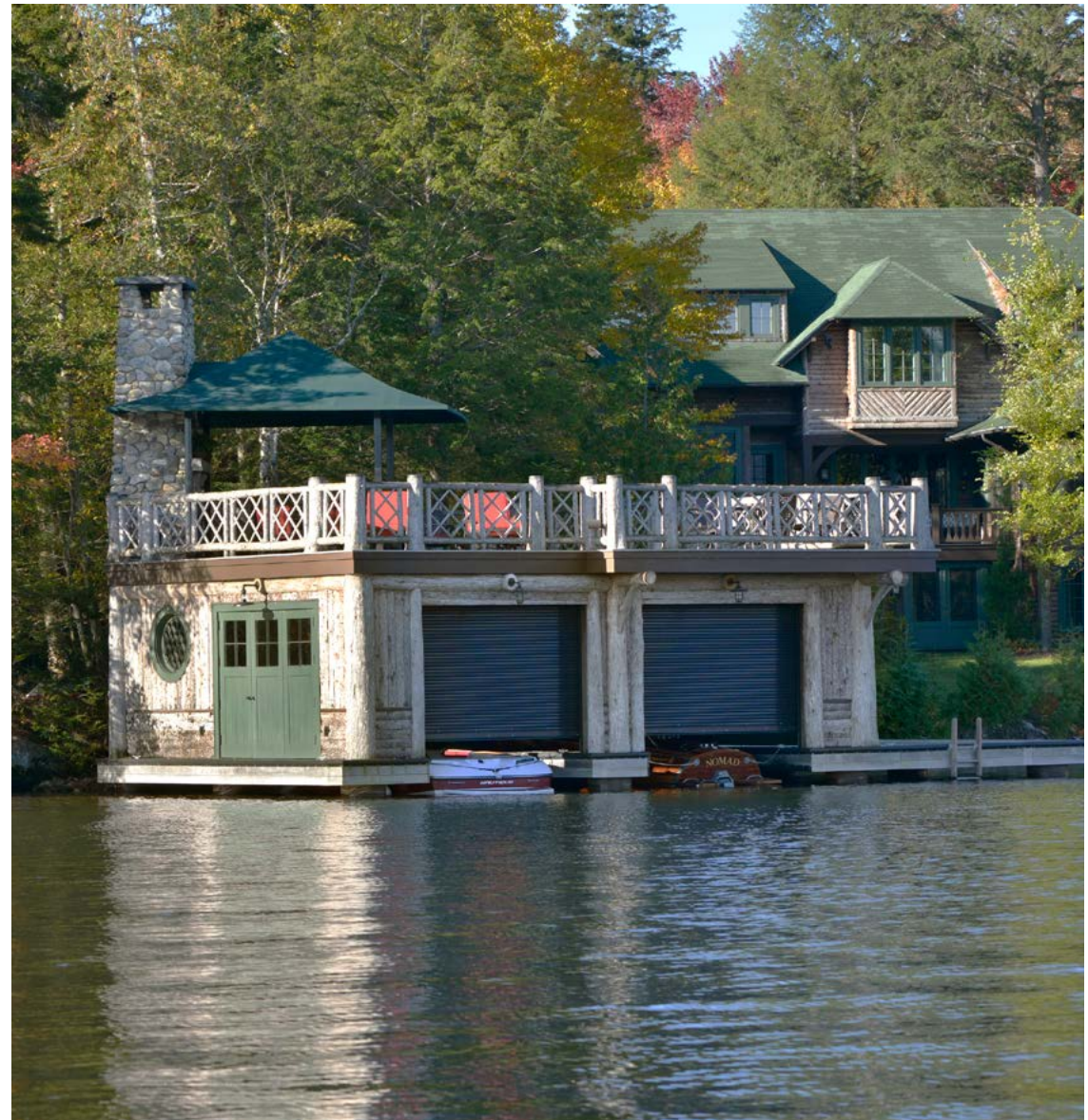












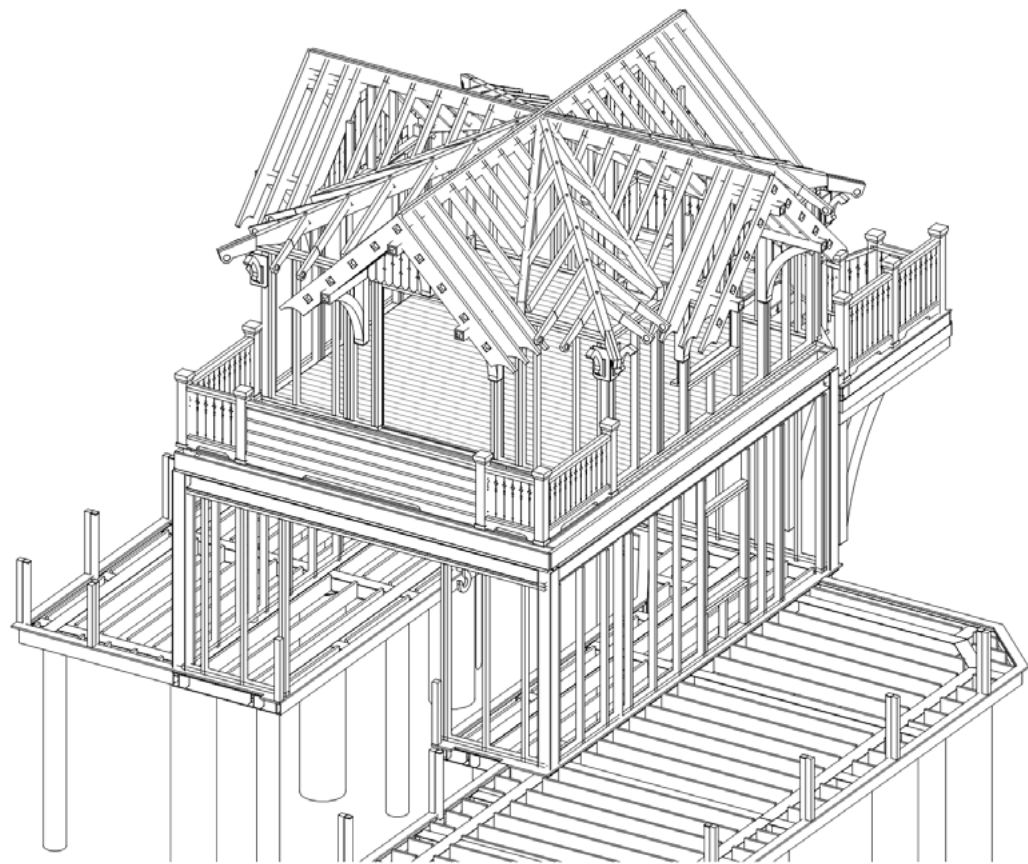






Kitchen Design Consultant: Ann Stillman O'Leary





ISOMETRIC FRAME SYSTEM NORTHWEST









Thank You.

We look forward to partnering with you on your next project.

Find out more at beardsley.com.



Michael N. Reynolds, AIA
518.483.1585

beardsley.com